

Parks and Recreation Plan



City of Hamtramck

3401 Evaline Street
Hamtramck, Michigan 48212
Tel: 313-800-5233

Purpose

A unique enclave of diversity and world culture, Hamtramck is a city of 2.1 square miles almost entirely surrounded by Detroit. The City of Hamtramck considers recreational planning especially important given the character of our community and region. The conditions imposed by a dense urban environment make the planning and development of our park and recreational space all that much more important. In addition to continuing to provide recreational services to its residents, the Hamtramck City Council recognizes the importance of planning for future recreation services and facilities.

The lack of greenspace and public land within Hamtramck's borders provides few recreation opportunities for residents and visitors, which makes planning for the improvement and development of our public recreation resources a priority. Park and recreational facility users represent a wide range in age, ability, and interests; we recognize that recreation can take many forms and be both active (physical) and passive (non-physical) by nature. Therefore, this plan will consider recreation to be any type of conscious enjoyment of an activity or experience in a public place.

This plan will:

1. Assess the existing recreational assets in the City of Hamtramck.
2. Determine opportunities to expand and improve those assets.
3. Maintain a history and update the status of previous recreation-related projects.
4. Utilize public input to determine goals and priorities for Hamtramck's recreation areas.
5. Present an action plan in which specific top priority projects are named, responsibilities assigned, and possible funding sources identified.
6. Provide a process for coordinating (and evaluating the coordination of) activities planned by the public and for the public.
7. Enable the City of Hamtramck to pursue additional opportunities for recreation funding.

Community Description ¹

Hamtramck is “The World in Two Square Miles” because of its long history of diversity and cultural dynamism. Located in southeastern Michigan, Hamtramck is a city with a rich history and a bright future in spite of its modest proportions. With an area of only approximately 2.1 square miles, Hamtramck is the most densely populated city in Michigan. Long defined by a history of industry and immigration, Hamtramck is unique in its walkability, diversity, and the lasting impact it has had on so many of the people who have called it home—past, present, and future.

Incorporated as a city in 1922, Hamtramck is an independent municipality surrounded on nearly all sides by Detroit, with the only exception being a short border with Highland Park to the northwest. Long associated with immigrants of Polish and other eastern European origin, Hamtramck has truly become the *world* in two square miles in recent decades. Nearly thirty languages are spoken by students in Hamtramck Public Schools, with only a third of the population speaking exclusively English at home.

The population is around 22,000 people with over 7,000 households. The census data suggests that just over 50% of the population is white, but this is misleading because the census includes those of Arab ancestry under their Caucasian category. With that being said, our largest two ethnic groups are Yemeni and Bengali, respectively. The median age of Hamtramckans is 28 years old. The majority of Hamtramck’s housing stock was constructed before 1939, reflecting the original period of population growth in connection with the automotive industry in the early 20th century.

Hamtramck is host to annual festivals like the Hamtramck Music Festival, Countdown to Paczki Day, St. Florian Strawberry Festival, Neighborhood Arts Festival, Diversity Festival, Eid Festival, Labor Day Festival, as well as City-sponsored seasonal events like Music in the Park, Art in the Park, and Winter Glow.

Hamtramck has faced a number of very serious financial challenges. The city has fallen into receivership twice in the last couple of decades (2000-2007, 2013-2014). The median income in our community is among the lowest in the State of Michigan at approximately \$27,000, and changes to the industrial landscape in Michigan and the Great Lakes region have impacted our residents and their families. A high poverty rate (approximately 55%) has made it difficult for many residents to afford upgrades to their homes, the overwhelming majority of which were constructed between 1910 and the 1930s.

¹ All Community Description information can be found here:

Quickfacts: Hamtramck City, Michigan, 2010. www.census.gov/quickfacts/hamtramckcitymichigan.

Administrative Structure

The City of Hamtramck's government consists of a six-member City Council, presided over by a Mayor. Day-to-day operations are supervised by a City Manager, who is directly accountable to the Council.² Under the supervision of the City Manager, parks and public spaces are managed in collaboration between the Department of Public Services and the Department of Community & Economic Development.

Several organizations involved with parks and public space work within this structure, with members approved by the Mayor and City Council. Among them are the Downtown Development Authority, the Beautification Commission, and Arts and Culture Commission.

The City of Hamtramck also has a number of government partners it collaborates with on parks and recreation projects. Hamtramck Public Schools is an essential collaborator on all things related to public input and using partnering for grant opportunities. Along with the schools, the city has formed the Hamtramck Parks Conservancy to maintain and maximize the use of community parks.³ The conservancy will be a cooperative effort to build upon our current parks investment and use the whole city area's greenspace. The County of Wayne serves as an important partner in all that we do with funding through Community Development Block Grants and other sources of revenue as well. In some instances, they take the lead on Hamtramck recreation-related projects, such as the Historic Hamtramck Stadium. The Michigan Economic Development Corporation is another partner that provides funding for many projects as well. Additionally, the City of Hamtramck actively collaborates with the City of Detroit on projects that involve both communities, such as the Joe Louis Greenway.

Many non-governmental organizations also work with the City of Hamtramck. Wayne Metro Community Action Agency is an important partner that acts as a fiduciary for projects such as Salaam Peace Park. DTE Energy Foundation as well as the Department of Natural Resources provide help in beautification efforts and tree planting. Our efforts would be futile without the support of organizations that provide volunteers and expertise, such as the Greening of Detroit and the Social Forestry Project, both of which have been involved in Hamtramck's tree-planting efforts in recent years.

² *City of Hamtramck Charter*. <https://hamtramck.us/wp-content/uploads/2020/04/charter.pdf>

³ Hamtramck Recreation District Advisory Group. "Hamtramck Park Conservancy Board of Directors Seeking Community Representative." *City of Hamtramck*, 19 Nov. 2020, hamtramck.us/hamtramck-park-conservancy-board-of-directors-seeking-community-representative/.

The following is a more complete list of stakeholders including some not previously mentioned:

- Hamtramck Parks Conservancy
- Hamtramck Public Schools
- Hamtramck's Downtown Development Authority
- City of Detroit
- Bangladeshi American Public Affairs Committee
- Yemeni American Leadership Association
- Wayne County Commissioner's Office
- MI State Rep. Abraham Aiyash
- MI State Senator Adam Hollier
- Hamtramck Community Initiative
- SEMCA / MI Works!
- Hamtramck Historical Museum
- People's Community Services
- Piast Institute
- Religious Organizations
- Service Organizations
- Nonprofits serving Hamtramck
- Charter Schools
- Federal Office Holders
- City of Highland Park

The following is a list of the City of Hamtramck's elected City Council and appointed City Manager:

Karen Majewski – Mayor
 Fadel Al-Marsoumi – Mayor Pro Tempore
 Ian Perrotta – Councilmember
 Mohamed Alsomiri – Councilmember
 Nayeem Choudhury – Councilmember
 Mohammed Hassan – Councilmember
 Saad Almasmari – Councilmember

Kathleen Angerer – City Manager

Inventory of Existing Parks, Natural Areas and Recreation Facilities

The data provided in this section was collected by the City of Hamtramck Department of Community and Economic Development using inventories created for past iterations of the Master Plan, the Downtown Development Plan, site visits, and internal City of Hamtramck resources. The ADA Checklist was developed by the Institute for Human Centered Design and the ADA National Network.⁴

ADA COMPLIANCE RANKING EACH FACILITY:

- 1 = None of the facilities/park area meets accessibility guidelines.
- 2 = Some of the facilities/park area meets accessibility guidelines.
- 3 = Most of the facilities/park area meets accessibility guidelines.
- 4 = The entire facility/park area meets accessibility guidelines.
- 5 = The entire facility/park area was developed/renovated using the principals of universal design.

⁴ ADA Checklist For Existing Facilities, Institute for Human Centered Design. 2017.
<https://www.adachecklist.org/checklist.html#rec>

The following properties are owned by the City of Hamtramck for park use:

Name	Location	Description/Purpose	Previous Projects (last 5 years)	ADA Rating
Veterans Park (photo 1)	8648 Joseph Campau Avenue, 42°23'23.6"N 83°03'10.5"W	By far Hamtramck's largest park, Veteran's Park is located on Joseph Campau in the south end of the city. The park includes a children's playscape area, tennis courts, beach volleyball courts, futsal court, a turf soccer pitch, a baseball field and the newly re-developed historic Hamtramck Stadium. In total, it is 10.849 acres.	<ul style="list-style-type: none"> – Children's playscape – Turf soccer field – Historic Hamtramck Stadium – Cricket pitch 	3
Sarah Garrett Park (photo 2)	11355-11383 Dequindre Street, 42°23'50.4"N 83°04'10.4"W	One of our newest parks, Sarah Garrett Park is composed of four formerly vacant residential lots on Dequindre Street north of Caniff in the northwest portion of the city. Currently in development, the park is nearing completion. This park is 0.39 acres.	<ul style="list-style-type: none"> – Planting of trees and shrubs – Gazebo pavilion – Parking lot – Light fixtures – Picnic tables and benches 	3
Salaam Peace Park (photo 3)	2134 Trowbridge Street, 42°23'50.2"N 83°03'50.8"W	Salaam Peace Park is a former residential lot on Trowbridge Street, in the west side of the city. It was donated to the City of Hamtramck in 2019. The park will be completed in 2021, using funds from a crowdfunding campaign in 2020. Salaam Peace Park is designed to be a "pocket park" in the middle of the neighborhood. It is .069 acres.	<ul style="list-style-type: none"> – None 	N/A
Holbrook Gardens Park (photo 4)	2410-2430 Alice Street, 42°23'13.5"N 83°03'12.4"W	Consisting of several former residential lots, Holbrook Gardens Park is designed to be a community garden area on the southwest end of the city. It is .14 acres.	<ul style="list-style-type: none"> – Pergola construction 	1

Pope Park (photo 5)	10037 Jos. Campau, 42°23'53.6"N 83°03'33.2"W	Located on the corner of Belmont Street and Joseph Campau Avenue, this small park is dedicated to Pope John Paul II, who visited the city in 1987. It includes newly refurbished plaques, commemorative donor bricks, benches, and a statue of Pope John Paul II. It is located in the heart of our downtown. Pope Park is .092 acres.	– None	4
Zussman Park (photo 6)	3401 Evaline, 42°23'57.8"N 83°03'10.7"W	Located outside of City Hall, Zussman Park recently went through renovations, including new pavement and a pergola, with access to electricity for events such as Music in the Park or the annual Winter Glow. In total it is .882 acres in size.	– Complete re-design and re-development to include new sidewalk, stage area, benches, and memorial plaque.	4



Veterans Park



Sarah Sims Garrett Memorial Park



Salam Peace Park



Holbrook Garden Park



Pope Park



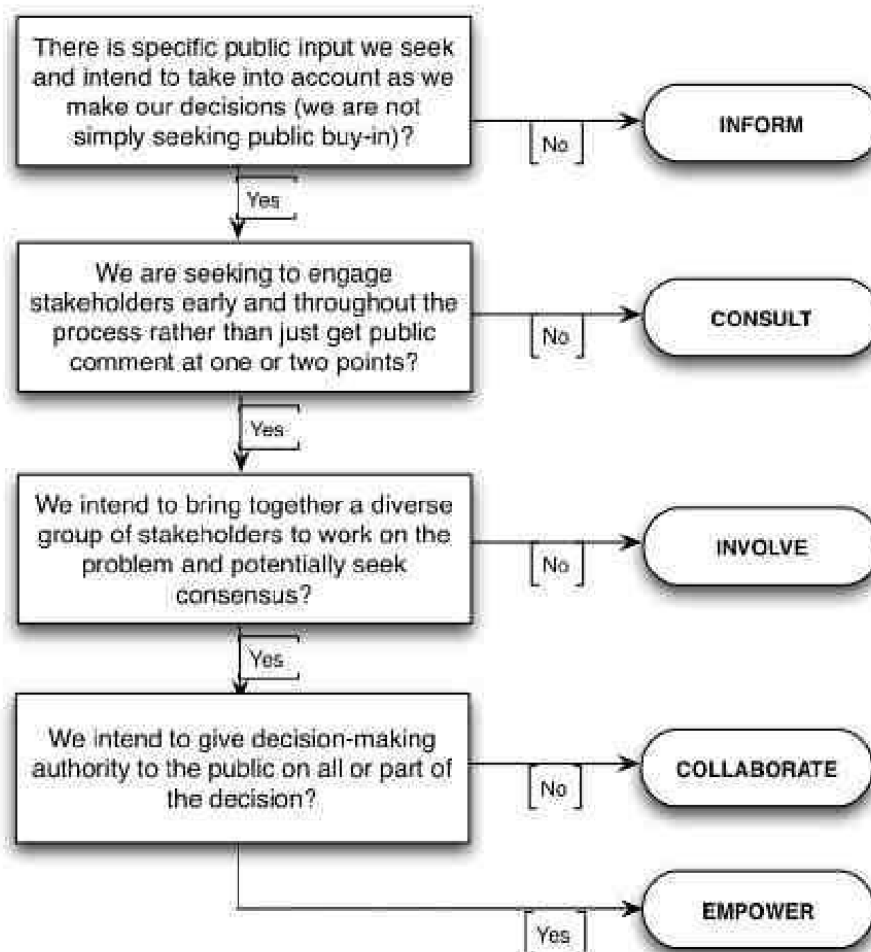
Zussman Park

Description of the Planning and Public Input Process

The City of Hamtramck is committed to involving the community in its planning and development process. Our Public Participation Plan is meant to establish a way to engage residents in this process, provide a proactive guide of community engagement strategies for City staff, and to give community members an overview of how they can get involved in the planning and development process.

The City of Hamtramck has a wide range of public participation strategies at its disposal. These strategies fall into several categories, namely: inform, consult, involve, collaborate, and empower.⁵ The categories represent varying levels of engagement, and the City may use the following flowchart to determine which is appropriate for specific scenarios.

⁵ *Public Participation Plan*. City of Hamtramck, 23 Sept. 2019.



6

⁶ Flow Chart: Select an Appropriate Level of Public Participation, Environmental Protection Agency, 13 Mar. 2017. www.epa.gov/international-cooperation/flow-chart-select-appropriate-level-public-participation.

Once a category of engagement is identified, the following chart may be utilized to determine which strategy is most appropriate:

Guide to Choosing a Strategy

	Inform	Consult	Involve	Collaborate	Empower
Public Participation Goals	The City of Hamtramck will provide the public with balanced and objective information to assist them in understanding the problem, alternatives, opportunities, and/or solutions.	The City of Hamtramck will obtain public feedback on analysis, alternatives, and/or decisions.	The City of Hamtramck will work directly with the public throughout the process to ensure that public concerns and aspirations are consistently understood and considered.	The City of Hamtramck will partner with the public in each aspect of the decision, including the development of alternatives and the identification of the preferred solution.	The City of Hamtramck will place the final decision making in the hands of the public.
Public Participation Strategies	<ul style="list-style-type: none"> – Notices – Public Meetings – Mailing list notice – Outdoor signs – Neighborhood meetings – Press releases 	<ul style="list-style-type: none"> – Public hearings – Surveys – Social media – Interviews 	<ul style="list-style-type: none"> – Town hall meetings – Pop-up engagement – Focus groups – Public workshops – Walkabouts 	<ul style="list-style-type: none"> – Charrettes – Committees – Citizen advisory groups 	<ul style="list-style-type: none"> – Ballot measures

The Master Plan serves as a guide for the Parks and Recreation Plan. The Master Plan reads:

“The Hamtramck Master Plan was conceived as a true city-wide community-driven plan that will serve as a unified voice for local residents, business owners, institutions, students, community leaders, and political representatives, among others. As such, the planning process was designed to not only engage the public, but also help to build a sense of community among the City’s diverse constituency.”⁷

Community outreach was complimented with a comprehensive, data-driven analysis. It concludes “the result is a plan rich in detail and forward thinking yet keenly aware of the funding challenges the City faces.”⁸

Specifically regarding Veteran’s Park, the Hamtramck Recreation District guides this parks and recreation plan. The Hamtramck Recreation District Plan reads:

“This design framework plan is a collaborative effort between designers, financial experts, the city, and the community to create an innovative design and implementation roadmap for the currently underutilized 26-acre Recreation District in Hamtramck, a dense and diverse city nested within the city of Detroit. The City of Hamtramck and Hamtramck Public Schools—as shared owners of the site—have partnered with key stakeholders, the Detroit City Football Club (DCFC) and Friends of Historic Hamtramck Stadium, to develop a plan for the Hamtramck Recreational District. The district includes Keyworth Stadium, where the DCFC soccer team now plays, the Historic Hamtramck Stadium, which was once home to the Negro National League Detroit Stars and is one of five remaining Negro League stadiums in the nation, and Veteran’s Memorial Park. The potential for the future of the Recreation District is deeply rooted in the site’s rich history as a place for equity and justice, sport and leisure. Through careful consideration of historic context, long-term financial planning, and direct engagement with the local community, a visionary and sustainable local treasure and destination looks to the future while celebrating the past.”⁹

⁷ *City of Hamtramck Master Plan*, City of Hamtramck, 2010, p. 2.
https://www.dropbox.com/sh/kfzwbv9hi8j4649/AACXsOsl-0cgOWWY2TxK-wEXa/HAMTRAMCK_MP_FINAL.pdf?dl=0

⁸ *City of Hamtramck Master Plan*, City of Hamtramck, 2010, p. 2.
https://www.dropbox.com/sh/kfzwbv9hi8j4649/AACXsOsl-0cgOWWY2TxK-wEXa/HAMTRAMCK_MP_FINAL.pdf?dl=0

⁹ *Hamtramck Recreation District Plan*, City of Hamtramck, Hamtramck Public Schools, Jan. 2020. p. 8.
mmlfoundation.org/wp-content/uploads/2020/10/HRD_FINAL-BOOK-20201.pdf.

Goals and Objectives

The following goals and objectives were created through a long history of public input through a variety of methods. Public comment is always received and noted at bi-weekly City Council meetings, as well as monthly meetings via the various boards and commissions of the city. Veterans Park plans underwent vigorous and diverse public participation sessions including focus groups, surveys, and community meetings. Salam Peace Park was designed through surveying of the park's neighbors on Trowbridge Street. Sarah Garrett Park was created under the supervision of the park's neighborhood leaders including the plaintiffs of the Sarah Sims Garrett lawsuit.

Goal A: Development of parks mentioned in inventory

- Veterans Park
 - Follow plan as described in Hamtramck Recreation Plan
- Sarah Garrett Park
 - Installation of monument commemorating the Sarah Sims Garrett Discrimination Case
 - Planting of wildflowers
- Salaam Peace Park
 - Install permeable pavers
 - Plant trees
 - Install benches
 - Install playscapes
 - Install fencing
- Holbrook Gardens Park
 - Create development plan

Goal B: Beautification of public space

- Residential street tree plantings
 - Priorities based on Davey Resource Group Hamtramck Tree Survey
 - <https://hamtramckmi.treekeepersoftware.com>
- Joseph Campau flower beds
 - In coordination with Downtown Development Authority, plant and maintain the flower beds in our downtown district

Goal C: Improve connectivity of non-motorized transportation

- Hamtramck will complete its part of the Joe Louis Greenway
 - Construction of bike lanes on Joseph Campau
 - Enhance alleyway on west side of Joseph Campau to become pedestrian walk and bikeway
- Install bike racks at various parks around the city
- Join a regional ride-sharing program
 - MoGo Bikes

Goal D: Improve ADA Ratings

- The city will improve its ADA accessibility at all public spaces.

Goal E: Upgrade Existing Facilities.

- Maximize the use of parks and recreation facilities by upgrading existing facilities to make them safer and more accessible to better serve the public.

Goal F: Improve Public Perception.

- The city will increase public awareness of the existing City parks and recreation facilities in order to strengthen community support for parks and recreation.

Action Program

2021

Project	Goal	Location	Cost	Leadership	Partners	Funding Source
Monument Installation	A	Sarah Garrett Park	\$22,000	City of Hamtramck	County of Wayne	Wayne County Parks Millage Fund Grant (Martha G. Scott)
Joe Louis Greenway	C	Joseph Campau/ Hamtramck Drive	Unknown	City of Hamtramck	City of Detroit, County of Wayne	TAP Grant
Historic Hamtramck Stadium	A	3201 Dan Street	Unknown	County of Wayne	City of Hamtramck	County of Wayne, Detroit Tigers
MoGo Bikes	C	5 locations all over the city	\$55,000	City of Hamtramck	MoGo Bikes	Tour de Troit, Hamtramck DDA, more TBD
Veterans Park Bathrooms	A	8648 Joseph Campau	\$80,000	City of Hamtramck	None	County of Wayne, McKee Foods – Outdoor Happiness!
Completion of Salaam Peace Park	A	Salaam Peace Park	\$42,000	City of Hamtramck	Wayne Metro, Patronicity	Patronicity Fundraiser
Earth Day Tree Planting	B	Location TBD	\$2,500	City of Hamtramck	ReLeaf Michigan, DTE Energy Foundation	ReLeaf Michigan, DTE Energy Foundation

Five-year plan

Project	Goal	Location	Leadership	Partners
Park Signage	F	All city parks	City of Hamtramck	None
Create ADA-friendly walkways at all parks that don't already have them	D	Sarah Garret Park, Salam Peace Park, Holbrook Garden Park	City of Hamtramck	None
Convert Joseph Campau alleyway into walkable and safe greenways	C, E	Alley on west side of Joseph Campau between Holbrook and Caniff Streets	City of Hamtramck	Hamtramck DDA, County of Wayne, and City of Detroit
Consistent Clean-up services of public spaces	E, F	All city-owned parks	City of Hamtramck	None
Acquire land to establish new park land	B	Northern area of Hamtramck	City of Hamtramck	Wayne County Land Bank
Re-plant and maintain full inventory of 300 trees lost in 1997 tornado	B	A	City of Hamtramck	Greening of Detroit, Social Forestry Project
Pass jurisdiction of Veterans Park to Hamtramck Parks Conservancy	E	Veterans Park	Hamtramck Parks Conservancy	City of Hamtramck, Hamtramck Public Schools